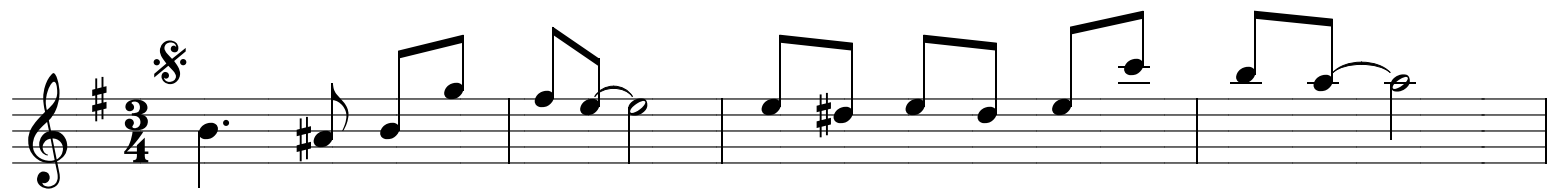
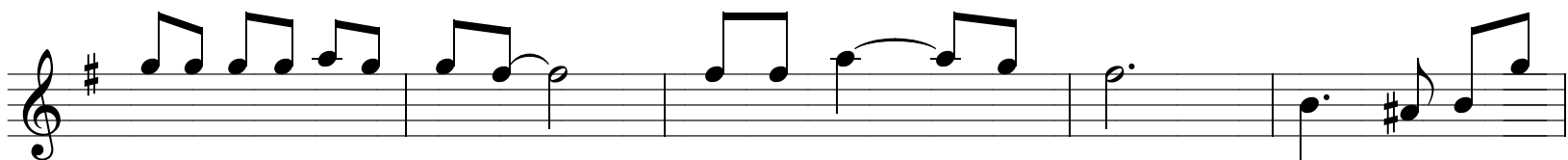


Ao cair da tarde

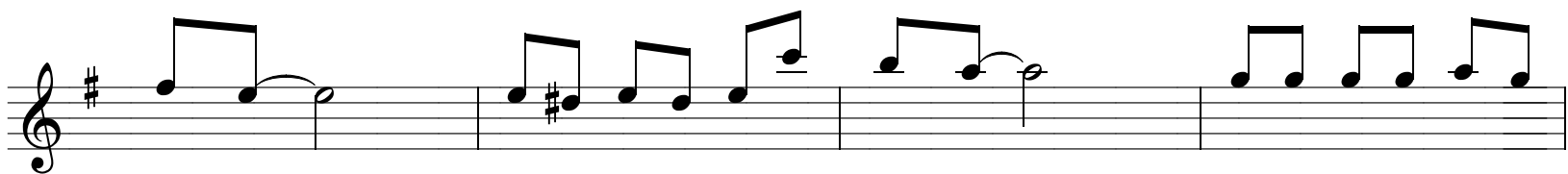
João Cabete



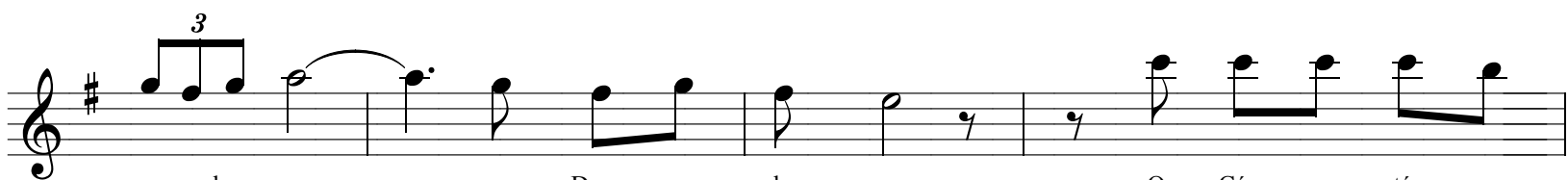
Ao ca ir da tar de Quan do_o Sol vai se_es con den do



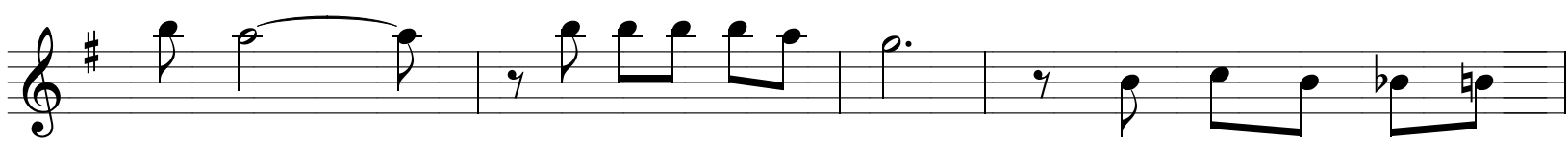
E a Ter ra_a dor me cen do Num ber ço de luz Ao ca ir da



tar de A pai sa germse_en ga la na Sin fo ni a so be



ra na de_a mor que_a Deus con du uz O Céu es tá sor



rin do Ou vin do_es ta can ção Es tre las vão sur



gin do Di a man tes na_am pli dão Eu si go_o meu ca



mi nho, Em pre ce a can tar, Eu sou a ve sem ni nho,

Can'tando verbona mar!...

The image shows a musical staff in G major (one sharp) with a treble clef. The melody consists of the following notes: a quarter rest, a quarter note G4, a quarter note A4, a quarter note B4, a quarter note C5, a quarter note B4, a quarter note A4, and a dotted half note G4. The lyrics 'Can'tando verbona mar!...' are written below the staff, with the first syllable 'Can' under the first note, 'tan' under the second, 'do_o' under the third, 'ver' under the fourth, 'bo_a' under the fifth, and 'mar!...' under the final note.